

THE DEDICATION OF A CHURCH IN WHICH SACRED CELEBRATIONS
ARE ALREADY REGULARLY TAKING PLACE

Anointing of the Altar and the Walls of the Church, first option
(Chapter III, no. 24)

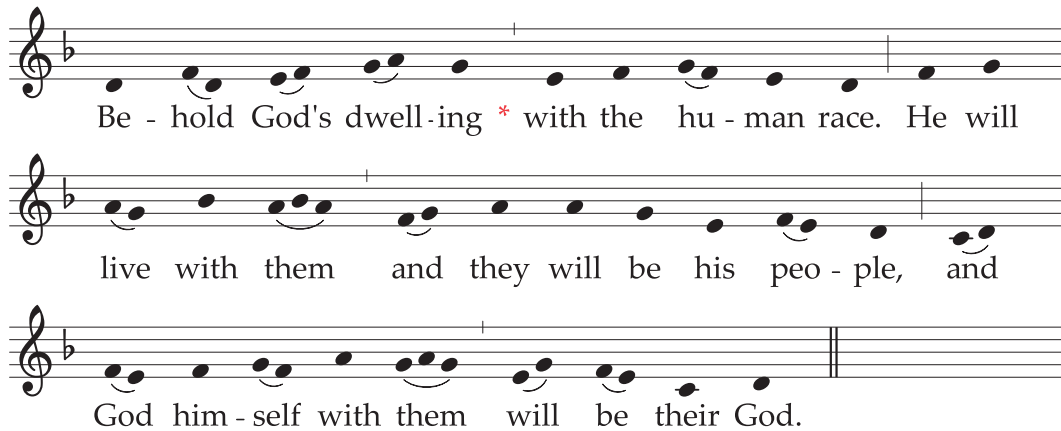
Mode 1




Be-hold God's dwell-ing * with the hu-man race. He will
live with them and they will be his peo-ple, and God
him-self with them will be their God, al-le-lu-ia.

(outside of Easter Time)

Mode 1

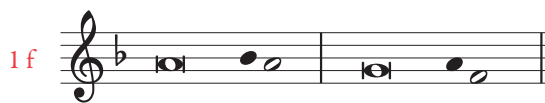


Be - hold God's dwell-ing * with the hu - man race. He will
live with them and they will be his peo - ple, and
God him - self with them will be their God.

1 f 

Psalm 84 (83)

- 2 How lovely is *your dwelling place*, *
O LORD of **hosts**.
- 3 My soul is longing *and yearning* *
for the courts of *the LORD*.
My heart and my flesh *cry out* *
to the living **God**. **R.**
- 4 Even the sparrow finds *a home*, *
and the swallow a nest for *herself*
in which she sets her young, at *your altars*, *
O LORD of hosts, my king and *my God*. **R.**



- 7 As they go through the Baca Valley, †
they make it a place of **springs**; *
the autumn rain covers it *with* **pools**.
- 8 They walk with ever-growing **strength**; *
the God of gods will appear *in* **Zion**. **R.**
- 9 O LORD God of hosts, hear *my* **prayer**; *
give ear, O God *of* **Jacob**.
- 10 Turn your eyes, O God, *our* **shield**; *
look on the face of your *anointed*. **R.**
- 11 One day within *your* **courts** *
is better than a *thousand* **elsewhere**.
The threshold of the house of *my* **God** *
I prefer to the dwellings of *the* **wicked**. **R.**
- 12 For the LORD God is a sun, *a* **shield**; *
the LORD will give us his favor *and* **glory**.
He will not withhold any **good** *
to those who walk *without* **blame**.
- 13 O LORD of hosts, *how* **blessed** *
is the man who trusts *in* **you**! **R.**

The English translation and chants of *The Order of the Dedication of a Church and an Altar* © 2014, 2018, International Commission on English in the Liturgy Corporation. *The Revised Grail Psalms*, copyright © 2010, Conception Abbey/The Grail, admin. by GIA Publications, Inc., www.giamusic.com. Used with permission. All rights reserved. This music may be reproduced free of charge in printed form, for non-commercial purposes, and in publications not for sale.