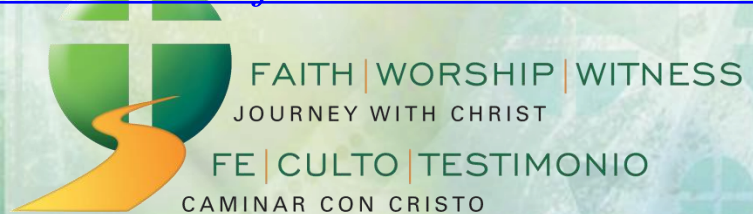


Poverty In America, 2013 and a Catholic Response

Tom Mulloy, Policy Advisor
Office of Domestic Social Development

Ruth Schultz

Centro de Trabajadores Unidos en Lucha



USCCB

Pope Francis

Evangelii Gaudium

... eliminate the **structural causes of poverty** and to promote the **integral development** of the poor, as well as small daily acts of solidarity in meeting the real needs which we encounter.

[Solidarity] presumes the creation of a new mindset . . . **community** and the **priority of the life** of all over the appropriation of goods by a few. (188)



Pope Francis

Evangelii Gaudium

The need to resolve the **structural causes of poverty** cannot be delayed, not only for the pragmatic reason of its urgency for the good order of society, but because **society** needs to be cured of a sickness which is weakening and frustrating it, and which can only lead to new crises. (202)



Poverty in America, 2013

Family Size	Annual Income
Single, Working-age Adult	\$12,100
with One Child	\$16,000
Adult Couple	\$15,600
with one child	\$18,700
with two children	\$23,600
with three children	\$27,400

<http://www.census.gov/hhes/www/poverty/poverty.html>



Poverty in America, 2013

Slight Progress...

- ▶ Poverty rate **14.5** percent... **45.3 million** people; first decline since 2006
- ▶ Hispanic poverty declined two percentage points; Hispanic children declined almost four percentage points

<http://www.census.gov/hhes/www/poverty/poverty.html>

<http://www.census.gov/content/dam/Census/library/publications/2014/demo/p60-249.pdf>



Poverty in America, 2013

Slight Progress...

- ▶ Child poverty **19.9** percent... **14.7** million... first decrease and lowest rate since 2000
- ▶ **11.2** percent of families in poverty... **9.1** million... first decrease since 2006

<http://www.census.gov/hhes/www/poverty/poverty.html>

<http://www.census.gov/content/dam/Census/library/publications/2014/demo/p60-249.pdf>



Poverty in America, 2013

Still Nowhere near Enough...

- ▶ **44** percent lived in deep poverty... **20** million people
- ▶ **34** percent of the country's total population lived in or near poverty



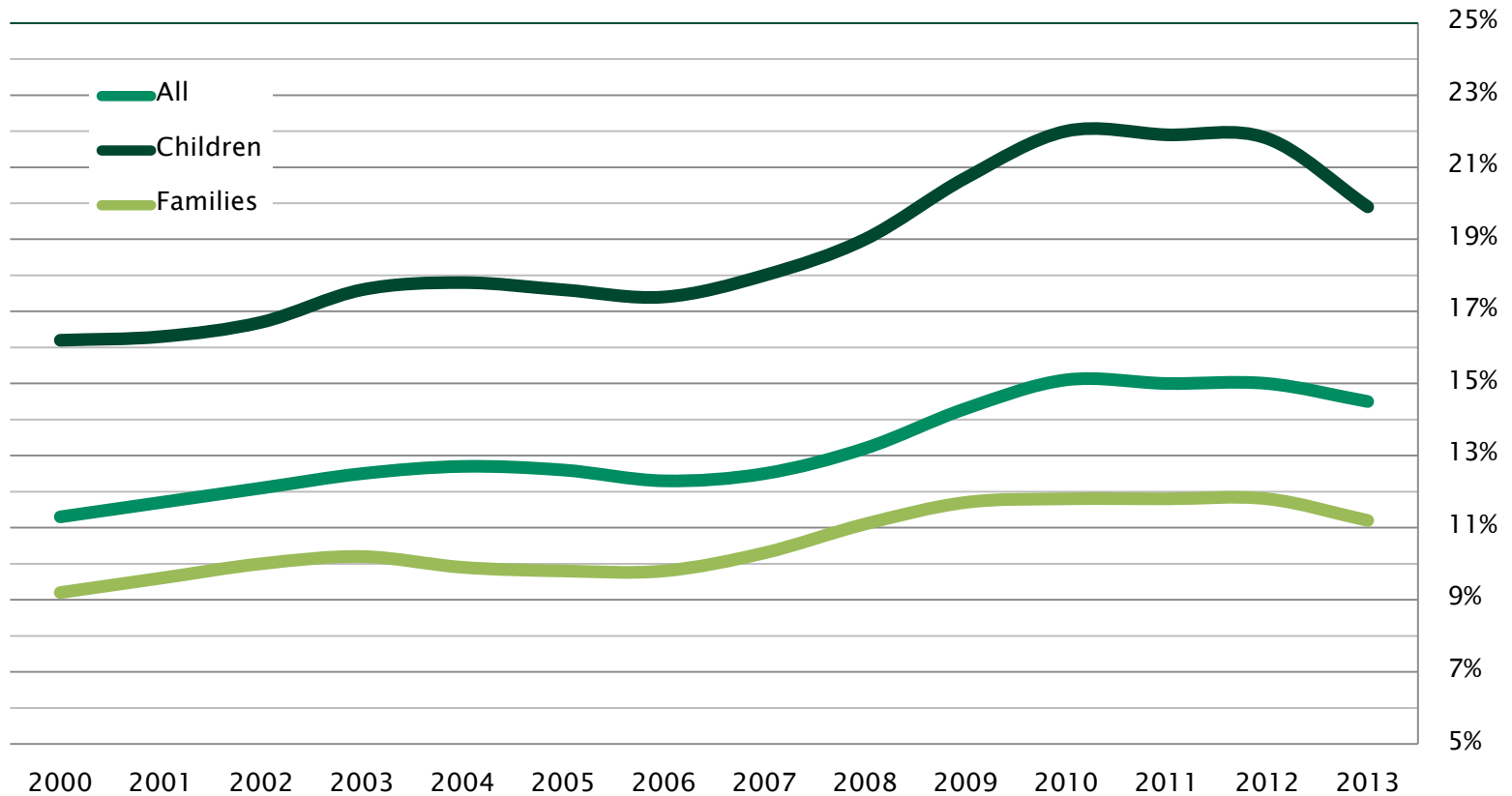
Poverty in America, 2013

Still Nowhere near Enough...

- ▶ **45** percent of children of single moms live in poverty
- ▶ Children are disproportionate share: only 23 percent of population, but almost 1/3 of people in poverty
- ▶ For families in poverty, the average income deficit is **\$9,800**... that number is increasing...



Poverty Rate, 2000-2013



Source: US Census Bureau

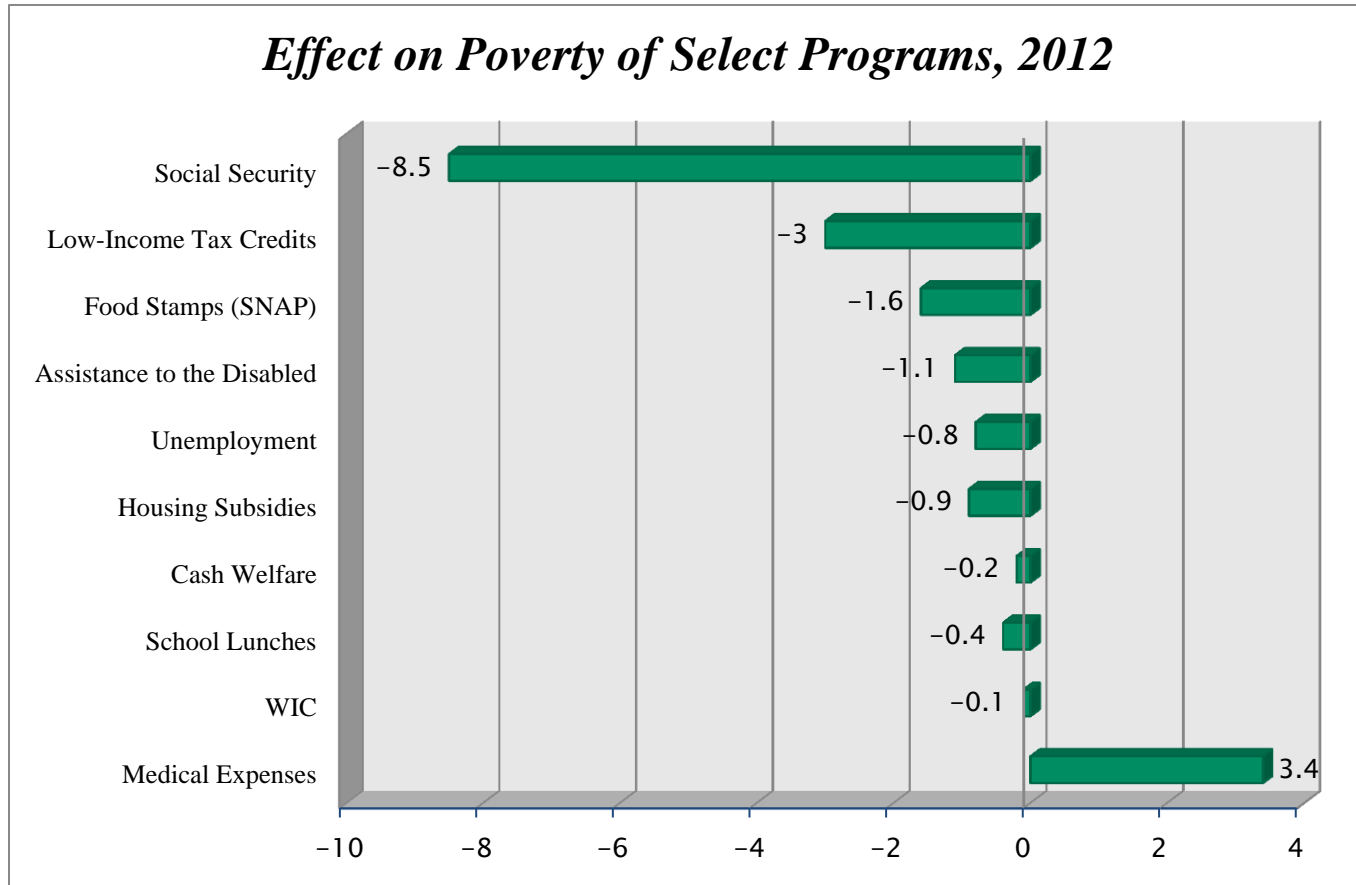


Poverty and Work

- ▶ 2.8 million more full-time workers in 2013
- ▶ Hispanic poverty declines tied to 3.5 percent increase in median income, the only group to see a significant gain
- ▶ Unemployment Insurance kept 1.2 million out of poverty
- ▶ Poverty rate for part-time workers increased to 17.5 percent



Federal Antipoverty Programs



Source: US Census Bureau

[Supplemental Poverty Measure](#)



State and Local Poverty

- ▶ Most states did not see a significant change in poverty
- ▶ New Jersey, New Mexico, and Washington increased
- ▶ New Hampshire and Wyoming decreased
- ▶ Most metro areas did not change
- ▶ St. Louis biggest decrease; Seattle biggest increase

<http://www.census.gov/content/dam/Census/library/publications/2014/acs/acsbr13-01.pdf>

<http://www.census.gov/content/dam/Census/library/publications/2014/acs/acsbr13-02.pdf>



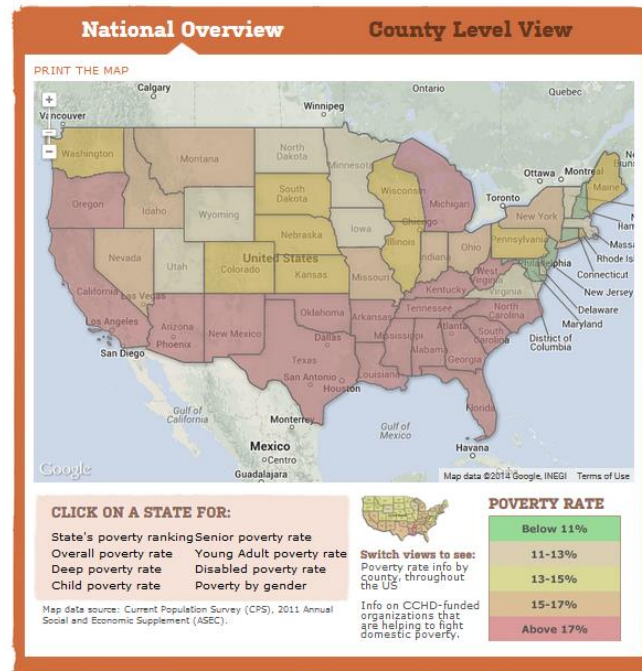
State and Local Poverty

Povertyusa.org

Home > The State of Poverty > Poverty Map

Poverty Map

This map can help bring to life the statistics and scope of Poverty USA. Use the **National Overview** to compare poverty levels of states. Use the **County Level View** for detailed info at a local level. The County Level View also shows places of hope where people are making a difference with the help of CCHD grants.



State and Local Advocacy

American Fact Finder

The screenshot displays the American Fact Finder interface. At the top, it features the U.S. Department of Commerce logo and the American Fact Finder title. A navigation bar includes links for MAIN, COMMUNITY FACTS, GUIDED SEARCH, ADVANCED SEARCH, and DOWNLOAD CENTER. Below the navigation bar, a search prompt asks for a state, county, city, town, or zip code, with a 'GO' button. A sidebar on the left lists various data categories such as Population, Age, Business and Industry, Education, Governments, Housing, Income, Origins and Language, Poverty, Race and Hispanic Origin, Veterans, and Show All. The main content area shows the selected location as 'United States' and displays the 'Census 2010 Total Population' as 308,745,538. It also provides a list of 'Popular tables for this geography' for the 2010 Census, 2012 American Community Survey, 2013 Population Estimates Program, and Census 2000.

U.S. Department of Commerce
United States Census Bureau

AMERICAN FactFinder

MAIN COMMUNITY FACTS GUIDED SEARCH ADVANCED SEARCH DOWNLOAD CENTER

Community Facts - Find popular facts (population, income, etc.) and frequently requested data about your community.

Enter a state, county, city, town, or zip code: GO

Population
Age
Business and Industry
Education
Governments
Housing
Income
Origins and Language
Poverty
Race and Hispanic Origin
Veterans
Show All

United States

Population
Census 2010 Total Population

308,745,538 Source: 2010 Demographic Profile

Bookmark Print

Popular tables for this geography:

2010 Census

- General Population and Housing Characteristics (Population, Age, Sex, Race, Households and Housing, ...)
- Race and Hispanic or Latino Origin
- Hispanic or Latino by Type (Mexican, Puerto Rican, ...)
- Households and Families (Relationships, Children, Household Size, ...)
- Compare States for Population, Housing, Area, and Density
- Compare Cities and Towns for Population, Housing, Area, and Density

2012 American Community Survey

- Demographic and Housing Estimates (Age, Sex, Race, Households and Housing, ...)

2013 Population Estimates Program

- Annual Population Estimates

Census 2000

- General Demographic Characteristics (Population, Age, Sex, Race, Households and Housing, ...)
- Compare States for Population, Housing, Area, and Density
- Compare Large Cities and Towns for Population, Housing, Area, and Density

Want more? Need help? Use Guided Search or visit Census.gov's Quick Facts.



Stay Active and Stay Tuned!

“The more we strive to secure a common good corresponding to the real needs of our neighbours, the more effectively we love them. Every Christian is called to practise this charity, in a manner corresponding to his vocation. . . .”

-Pope Benedict XVI, [Caritas in Veritate](#)

Sign up for [Notes for Neighbors](#) for action alerts, more resources, and to stay informed.

Thanks!

Tom Mulloy tmulloy@usccb.org

